





Funkcje sieciowe klimatyzatora SMART

Wygodne sterowanie przy użyciu aplikacji Smart A/C w smartfonie!

Aplikacja Smart A/C umożliwia łatwe i wygodne sterowanie klimatyzatorem z dowolnego miejsca.

Spis treści

Przygotowanie

Instalacja sieci	3
Przed rozpoczęciem korzystania z routera bezprzewodowego	3
Łączenie z siecią	3
Nawiązywanie połączenia między routerem bezprzewodowym a klimatyzatorem	3
Sprawdzanie instalacji modułu Wi-Fi	4
Demontaż modułu Wi-Fi	4
Montaż modułu Wi-Fi	5
Sprawdzanie stanu połączenia na wyświetlaczu	5
Sprawdzanie sieci	6
Nawiązywanie połączenia między routerem bezprzewodowym a klimatyzatorem za pośrednictwem sieci (Wybierz jedną z dwóch metod)	7
Rejestracja w serwisie	12
Rejestracja klimatyzatora	12

Podstawowe funkcje

Obsługa aplikacji Smart A/C	14
Ekran główny	14
Otwieranie menu In-home (W domu)	14
Sterowanie klimatyzatorem	15
Konfiguracja dodatkowych funkcji klimatyzatora	16
Funkcja ustawień zegara	16
Konfiguracja danych klimatyzatora	17
Otwieranie menu Out-of-home (Poza domem)	18

Inne

Rozwiązywanie problemów	19
Open Source Announcement	20
Reference	27



OSTRZEŻENIE

- i. Ostrzeżenie o działaniu fal radiowych – podczas instalacji urządzenia należy zachować 20cm odstęp.
- ii. Nie należy instalować ani używać tego modułu jednocześnie z innymi urządzeniami radiowymi bez wcześniejszego sprawdzenia działania lub spełnienia norm FCC.
- iii. instrukcje dotyczące oznakowania hosta: system hosta powinien być oznakowany etykietą o treści „Contains FCC ID: A3LSWL-B70F”





Instalacja sieci

[Connecting Network] (Łączenie z siecią)

Połącz router bezprzewodowy z klimatyzatorem.



[Registering service] (Rejestracja w serwisie)

Otwórz stronę <http://www.samsungsmartappliance.com> i zarejestruj się w serwisie.

Przed rozpoczęciem korzystania z routera bezprzewodowego

* Klimatyzator Wi-Fi nie obsługuje następujące tryby szyfrowania:

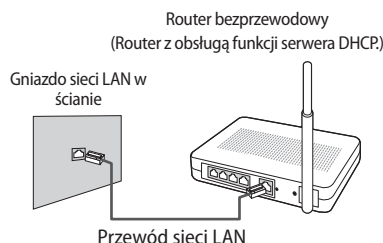
- Open(Otwarty) (bez szyfrowania), WPA/TKIP, WPA2/AES
- W przypadku użycia innego rodzaju szyfrowania nawiązanie połączenia Wi-Fi może być niemożliwe.

- ▶ Aby zainstalować klimatyzator Wi-Fi, wybierz odpowiednie miejsce w pobliżu routera sieci bezprzewodowej. W przypadku obniżenia poziomu sygnału Wi-Fi Smart App może się rozłączyć. zależy to od siły i zasięgu sieci.
- ▶ Działanie Smart App wymaga, aby smartfon znajdował się w zasięgu sieci Wi-Fi.
- ▶ Dla mobilnego internetu szerokopasmowego, Smart App może korzystać z wtyczki usb, jeśli działa ona w trybie Wi-Fi.
- ▶ Ten produkt obsługuje wyłącznie protokół DHCP (protokół dynamicznej konfiguracji hostów). Jeżeli użytkownik chce skorzystać z posiadanego routera bezprzewodowego, należy wyłączyć funkcję serwera DHCP.
- ▶ Wybierz nieużywany kanał routera bezprzewodowego.
- ▶ Podłączenie routera bezprzewodowego za pomocą trybu innego, niż powyższe może się nie udać lub spowodować, że klimatyzator nie będzie działał. Używając trybu WPA2/AES, zalecane jest korzystanie ze standardu 802.11n.
- ▶ Jakość bezprzewodowego połączenia z siecią zależy od otoczenia.
- ▶ Jeżeli dostawca usług internetowych na stałe zarejestrował adres komputera lub adres MAC (niepowtarzalny numer identyfikacyjny), klimatyzator może nie nawiązać połączenia z Internetem. W razie potrzeby podłączenia do Internetu innych urządzeń niż komputer należy skontaktować się z dostawcą usług internetowych.
- ▶ Jeżeli dostawca usług internetowych do nawiązania połączenia z Internetem wymaga identyfikatora lub hasła, klimatyzator może nie móc połączyć się z Internetem. W takiej sytuacji podczas nawiązywania połączenia z Internetem należy wprowadzić identyfikator lub hasło.
- ▶ Problemy z zaporą mogą uniemożliwić nawiązanie połączenia z Internetem. W takiej sytuacji należy skontaktować się z dostawcą usług internetowych.
- ▶ Jeżeli nawiązanie połączenia z Internetem jest niemożliwe pomimo wykonania procedur wskazanych przez dostawcę usług internetowych, należy skontaktować się z centrum serwisowym firmy Samsung.

Łączenie z siecią

Nawiązywanie połączenia między routerem bezprzewodowym a klimatyzatorem

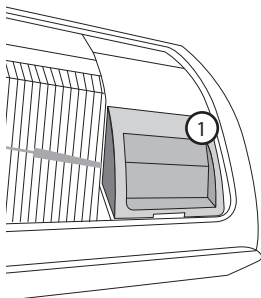
- ▶ Informacje dotyczące instalacji routera bezprzewodowego znajdują się w jego instrukcji obsługi.
- ▶ Inteligentny klimatyzator firmy Samsung obsługuje protokoły komunikacji IEEE802.11 b/g/n (2,4 GHz).
- ▶ Informacje dotyczące instalacji routera bezprzewodowego znajdują się w jego instrukcji obsługi.
Firma Samsung nie oferuje instrukcji do routerów bezprzewodowych.
- ▶ W przypadku routerów nieposiadających odpowiedniego certyfikatu połączenie z klimatyzatorem może być niemożliwe.
- ▶ Certyfikowane routery są oznaczone poniższym logiem na opakowaniu lub w instrukcji obsługi.





Łączenie z siecią

Sprawdzanie instalacji modułu Wi-Fi



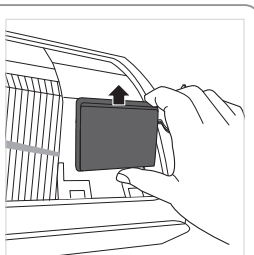
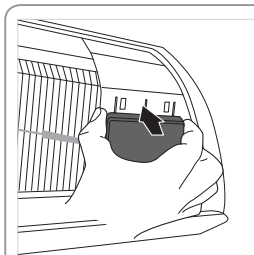
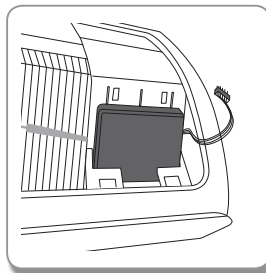
- ▶ Otworzyć osłonę filtra i sprawdzić moduł Wi-Fi (1) zainstalowany w przedniej części panelu. Stan połączenia między modułem Wi-Fi a routerem bezprzewodowym można sprawdzić za pomocą modułu Wi-Fi w sposób opisany na następnej stronie.
- ▶ Aby wymienić moduł Wi-Fi (montaż i demontaż), należy postępować według poniższych instrukcji.



UWAGA

- W przypadku wymiany modułu Wi-Fi należy sprawdzić adres MAC znajdujący się na module lub w dolnej części jednostki wewnętrznej i zmienić informacje o urządzeniu na stronie „Registering service” (Rejestracja).

Demontaż modułu Wi-Fi

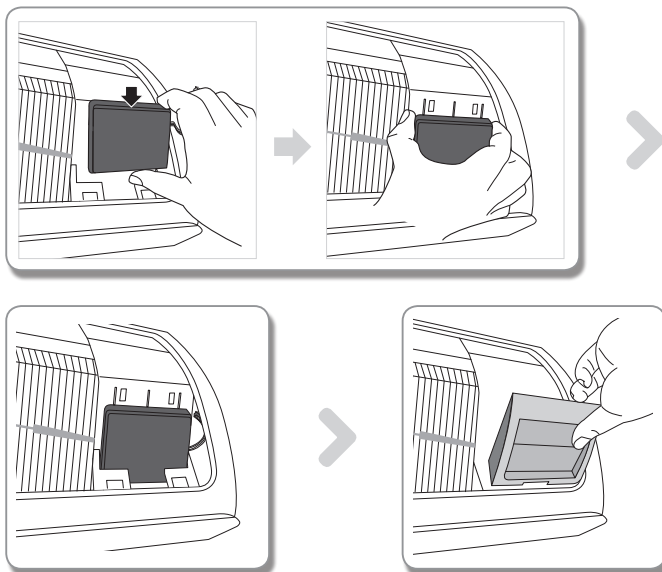


1. Zdjąć osłonę bocznego panelu.
2. Odłączyć przewód modułu Wi-Fi.
3. Odczepić zaczepek w górnej części modułu Wi-Fi i podnieść moduł, aby go zdemontować.



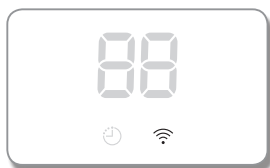


Montaż modułu Wi-Fi



1. Wcisnąć moduł Wi-Fi do gniazda i zatrzasknąć zacisk w górnej części.
2. Podłączyć przewód modułu Wi-Fi.
3. Zamknąć osłonę bocznego panelu.

Sprawdzanie stanu połączenia na wyświetlaczu



► Opis wyświetlacza Wi-Fi

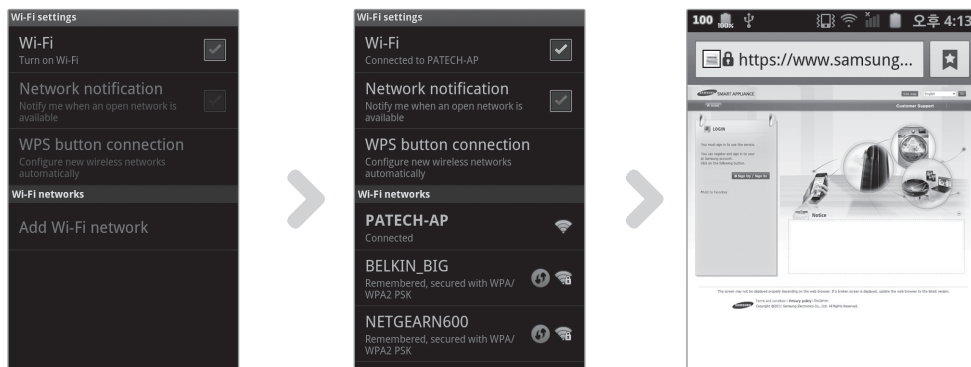
- 1) Wskaźnik LED Wi-Fi wyłączony:
Brak połączenia z punktem dostępu
Brak połączenia z Internetem
- 2) Wskaźnik LED Wi-Fi miga:
Połączenie z punktem dostępu
Brak połączenia z Internetem
- 3) Wskaźnik LED Wi-Fi świeci:
Połączenie z punktem dostępu
Połączenie z Internetem

Łączenie z siecią

Sprawdzanie sieci

Sprawdź, czy router bezprzewodowy łączy się ze smartfonem.

Jeżeli smartfon nie ma dostępu do Internetu, korzystanie z funkcji obsługi klimatyzatora przez sieć jest niemożliwe.



1. Znajdź na smartfonie router bezprzewodowy.
2. Z listy znalezionych routerów bezprzewodowych wybierz używany router.
3. Sprawdź, czy smartfon ma dostęp do strony internetowej <http://www.samsungsmartappliance.com>.



UWAGA

- Jeżeli do połączenia z Internetem należy podać identyfikator i hasło, przekaż do administratora sieci adres MAC klimatyzatora i uzyskaj zezwolenie na dostęp do Internetu z klimatyzatora.



PRZESTROGA

- Jeżeli do połączenia z Internetem wymagana jest instalacja programu dostarczonego przez dostawcę Internetu, połączenie klimatyzatora z Internetem jest niemożliwe.



Nawiązywanie połączenia między routerem bezprzewodowym a klimatyzatorem za pośrednictwem sieci (Wybierz jedną z dwóch metod)

Łączenie z siecią przy użyciu aplikacji Smart APP dla smartfona

Konfiguracja aplikacji na smartfonie firmy Samsung (pod kontrolą systemu Android)

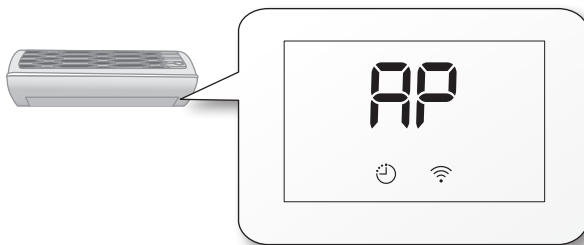


UWAGA

- Aby pobrać aplikację Smart A/C dla telefonów z systemem Android, wyszukaj wyrażenie Samsung, Smart, A/C, AC, Air lub Conditioner w serwisie Android Market lub Samsung Apps.



- Naciśnij na pilocie przycisk [2ndF] i przycisk [Wi-Fi].
 - Na przednim wyświetlaczu klimatyzatora pojawi się komunikat **AP**.



- Po włączeniu aplikacji Smart A/C wybierz kartę [Network Setting] (Ustawienia sieciowe).
- Naciśnij kartę [Setting Start] (Rozpoczęcie konfiguracji).



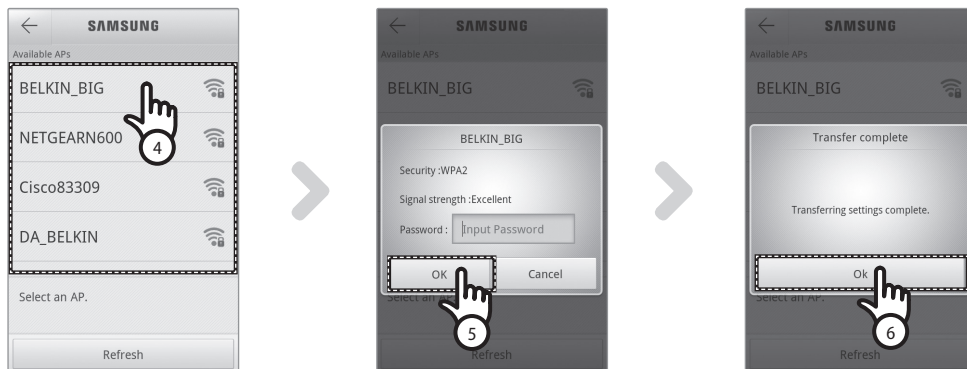
UWAGA

- Wersja programu na ilustracji w tej instrukcji jest przykładowa. Rzeczywista wersja może się różnić.





Łączenie z siecią



4. Wybierz używany router bezprzewodowy.
 - Jeżeli używasz wolnego routera bezprzewodowego, znajdź hasło w jego instrukcji obsługi.
5. Po prowadzeniu hasła wybranego routera bezprzewodowego wybierz kartę [OK].
 - Jeżeli hasło nie zostało ustawione, wybierz kartę [OK] bez wprowadzania hasła.
6. Po wyświetleniu okna „Transfer complete (Transfer zakończony)” wybierz kartę [OK].
 - Gdy wskaźnik Wi-Fi (📶) jest włączony, klimatyzator jest połączony z routerem i Internetem.
 - Gdy wskaźnik Wi-Fi (📶) miga, klimatyzator jest połączony z routerem, ale nie z Internetem. W takim przypadku należy sprawdzić połączenie z Internetem.
 - Gdy wskaźnik Wi-Fi (📶) jest wyłączony, klimatyzator nie jest połączony z routerem ani Internetem.
7. Jeśli po upływie 1~2 minut kontrolka LED Wi-Fi klimatyzatora nadal świeci, oznacza to, że konfiguracja powiodła się. Od tego momentu można używać smartfona do sterowania systemem.



- Podczas wyszukiwania sieci przez naciśnięcie przycisku [Wi-Fi] na przednim wyświetlaczu na maksymalnie 5 minut pojawi się komunikat (RP).



- Aplikacja Smart A/C jest zoptymalizowana do użytku z telefonami firmy Samsung. Obsługiwane modele obejmują telefony z serii Samsung Galaxy. Dodatkowe modele mogą zostać dodane w przyszłości. Na innych smartfonach niektóre funkcje aplikacji Smart A/C mogą być niedostępne.

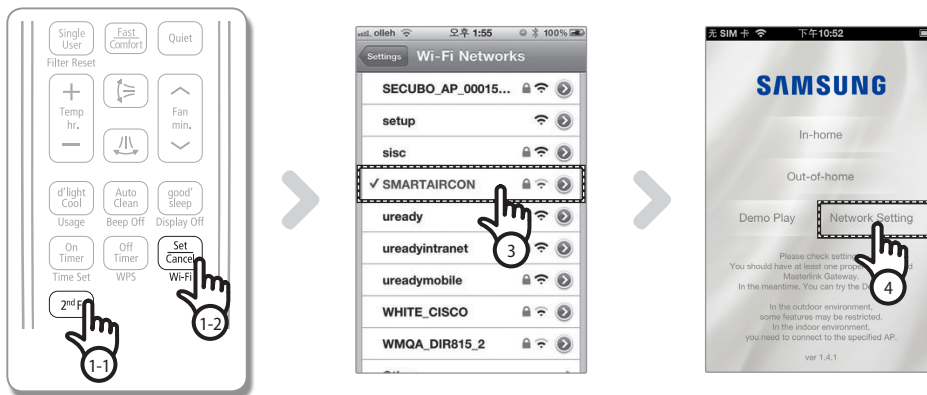




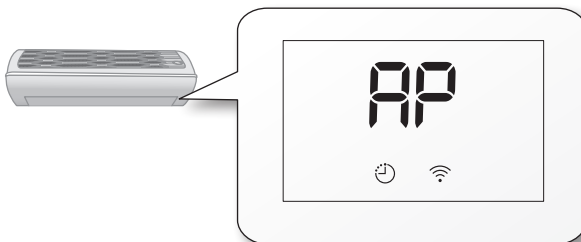
Konfiguracja aplikacji na iPhone



- Użytkownicy iPhone mogą pobrać aplikację Smart A/C szukając w Apple Store „Samsung, Smart, A/C, AC, Air, Conditioner”.



1. Naciśnij na pilocie przycisk [2ndF] i przycisk [Wi-Fi].
 - Na przednim wyświetlaczu klimatyzatora pojawi się komunikat **AP**.



2. Wybierz [Settings] (Konfiguracja) → [Wi-Fi] w menu iPhone.
3. Z listy sieci Wi-Fi wybierz SMARTAIRCON i wprowadź „111112222” jako hasło.
4. Po włączeniu aplikacji Samsung Smart A/C wybierz kartę [Network Setting] (Ustawienia sieciowe).



Łączenie z siecią



5. Naciśnij kartę [Setting Start] (Rozpoczęcie konfiguracji).
6. Wybierz używany router bezprzewodowy.
 - Jeżeli używasz wolnego routera bezprzewodowego, znajdź hasło w jego instrukcji obsługi.
7. Po wprowadzeniu hasła wybranego routera bezprzewodowego wybierz kartę [OK].
 - Jeżeli hasło nie zostało ustawione, wybierz kartę [OK] bez wprowadzania hasła.
8. Wprowadź dane routera i naciśnij [OK].
 - Wymagane informacje to: SSID, typ zabezpieczeń, typ szyfrowania, hasło.



- Jeśli nie znasz danych routera sieci bezprzewodowej, sprawdź je w instrukcji lub skontaktuj się ze swoim ISP (dostawcą internetu).

9. Po wyświetleniu okna „Transfer complete (Transfer zakończony)” wybierz kartę [OK].
10. Wybierz [Settings] (Konfiguracja) → [Wi-Fi] w menu iPhone.
11. Wybierz router bezprzewodowy, którego używasz i wprowadź hasło.
 - Gdy wskaźnik Wi-Fi () jest włączony, klimatyzator jest połączony z routerem i Internetem.
 - Gdy wskaźnik Wi-Fi () miga, klimatyzator jest połączony z routerem, ale nie z Internetem. W takim przypadku należy sprawdzić połączenie z Internetem.
 - Gdy wskaźnik Wi-Fi () jest wyłączony, klimatyzator nie jest połączony z routerem ani Internetem.
12. Jeśli po upływie 2 minut kontrolka LED Wi-Fi klimatyzatora nadal świeci, oznacza to, że konfiguracja powiodła się. Od tego momentu można używać smartfona do sterowania systemem.



- Podczas wyszukiwania sieci przez naciśnięcie przycisku [Wi-Fi] na przednim wyświetlaczu na maksymalnie 5 minut pojawi się komunikat AP.

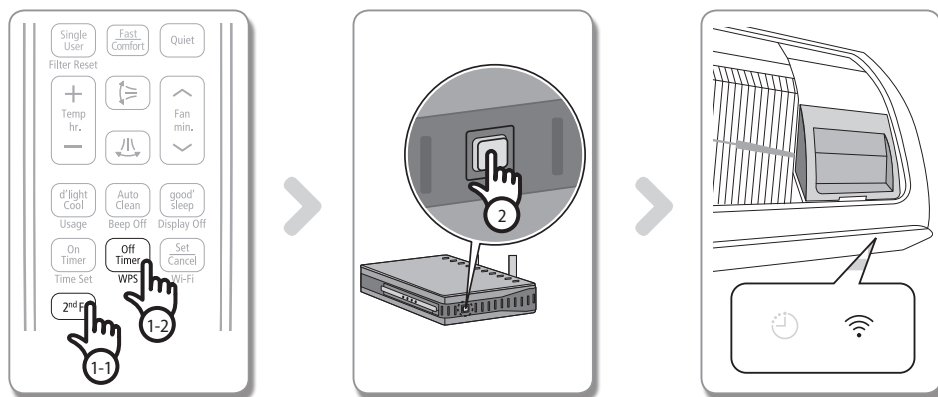


- Obsługiwane modele obejmują telefony iPhone 4, iPhone 4S, iPhone5. Dodatkowe modele mogą zostać dodane w przyszłości.



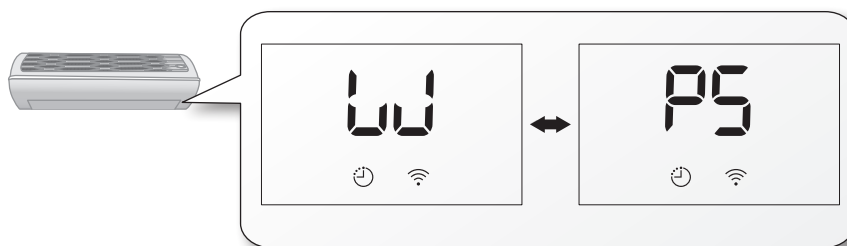


Łączenie z siecią z konfiguracją WPS



1. Naciśnij na pilocie przycisk [2ndF] i przycisk [WPS].

Na przednim wyświetlaczu klimatyzatora pojawi się komunikat LU ↔ PS.



2. Naciśnij przycisk [WPS] routera bezprzewodowego, który ma zostać podłączony do klimatyzatora, i uruchom w nim funkcję WPS. (Położenie przycisku WPS zależy od określonego urządzenia.)
3. Po prawidłowym połączeniu klimatyzatora z routerem bezprzewodowym kontrolka Wi-Fi (Wi-Fi symbol) modułu Wi-Fi będzie się świecić.



UWAGA

- Sprawdź, czy router bezprzewodowy obsługuje konfigurację Wi-Fi Protected Setup™ (WPS).
- Sprawdź, czy router bezprzewodowy ma przycisk WPS.
- Inteligentny klimatyzator firmy Samsung korzysta z konfiguracji WPS według metody PBC.
- Podczas wyszukiwania sieci wskutek naciśnięcia przycisku [WPS] pilot nie będzie działał przez maksymalnie 2 minut.
- Naciskając przycisk WPS należy zachować ostrożność, ponieważ w niektórych typach routerów przytrzymanie go przez dłuższy czas powoduje wyzerowanie ustawionych wartości.
- Obsługa routera bezprzewodowego w trybie WPS zależy od urządzenia. Dlatego zalecamy zapoznanie się z instrukcją obsługi posiadanego routera bezprzewodowego.



PRZESTROGA

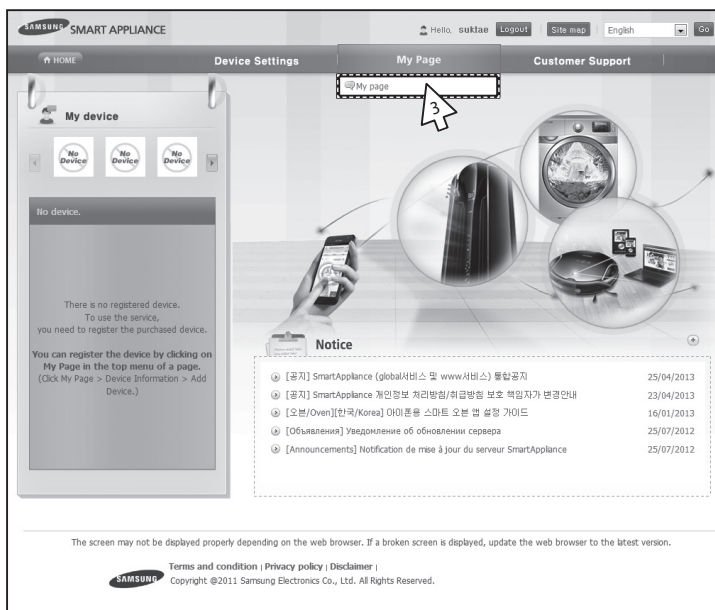
- Jeżeli router bezprzewodowy nie obsługuje uwierzytelniania przez WPS nawiązanie połączenia może się nie powieść.
- Niektóre routery bezprzewodowe (w tym routery bezprzewodowe nieobsługujące funkcji uwierzytelniania WPS) mogą tracić połączenie z wcześniej połączonymi urządzeniami, gdy klimatyzator nawiązuje połączenie z routerem bezprzewodowym.



Rejestracja w serwisie

Rejestracja klimatyzatora

1. Otwórz stronę Samsung Smart Appliance (<http://www.samsungsmartappliance.com>).
2. Zaloguj się, wprowadzając identyfikator użytkownika i hasło.
 - Jeżeli nie masz konta w tym serwisie, wybierz opcję [Create a Samsung account] (Utwórz konto w serwisie Samsung) i wypełnij formularz rejestracyjny.



3. Wybierz opcję [My page] (Moja strona) → [My page] (Moja strona).

The screenshot shows the 'My Page' section of the Samsung Smart Appliance website. The 'User information' tab is selected. The form contains fields for user details and a table for device information. An arrow points to the 'Add device' button.

User information		Appliance		Smart	
E-Mail	smartdemo.gu@gmail.com	First Name	Appliance	Last Name	Smart
Title	Mr	Phone number	01190292864	City/Province	
Date of birth	7/10/1979	Address line 1			
Nationality	KOR	Address line 2			
Zip-code		Address line 3			

Device name	Model name	Device no.	Date registered
[Add device]			

4. Wybierz opcję [Add device] (Dodaj urządzenie).



SMART APPLIANCE

Device Settings | My Page | Customer Support

Home > My page > Add my device

1. Certify device

Device no. []

2. After device registration please select the Products tab.

3. Standing air conditioner

You must be authorized before adding the air conditioner. Type the number, which is displayed on the label attached to the bottom right of the purchased air conditioner into the [Device no.] field correctly.

Label: Sample
MAC 00-2B-E8-B6-45-3B

1 Type only the numbers and character(s) of the 12 digit code next to the MAC address (not the "T").

2 Press the [Certify device] button and then turn on the air conditioner. If the air conditioner is already turned on, turn it off. Then turn it on again to check if the Wi-Fi connection is operating correctly.

Wall-mount air conditioner

You must be authorized before adding the air conditioner. Type the number displayed on the label attached to the bottom right of the purchased air conditioner or the module into [Device no.] field. The appearance of the product and the location of the label can be different depending on the model.

Sample
Device Number 00AA2B33CCD4

1 Type only the numbers and character(s) next to the Device Number.

2 Press the [Certify device] button and then turn on the air conditioner. If the air conditioner is already turned on, turn it off. Then turn it on again to check if the Wi-Fi connection is operating correctly.

확인

The following device has been certified. Press the OK button to continue the device registration.
Certified device: Smart Air Conditioner

5. Wpisz adres MAC zapisany na naklejce znajdującej się na spodzie klimatyzatora i kliknij polecenie [Certify device] (Certyfikuj urządzenie).
6. Wyłącz i włącz klimatyzator.
7. Po wyświetleniu komunikatu dotyczącego certyfikatu urządzenia kliknij [OK].
 - Jeżeli rejestrowany klimatyzator został wcześniej zarejestrowany przez innych użytkowników, pojawi się okno z pytaniem o usunięcie uprawnień dotychczasowych użytkowników do sterowania urządzeniem.

SMART APPLIANCE

Device Settings | My Page | Customer Support

Hello, [imsung] | LOGOUT | SETAPP | English

Home > My page > My page

1. User information

E-Mail: [imsung.choi@samsung.com]

Title: [Mr.] First Name: [imsung] Last Name: [choi]

Date of birth: [18/02/1985] Phone number: []

Nationality: [KOR] City/Province: [] City/Province: []

Zip-code: [] Address line 1: []

Address line 2: []

Address line 3: []

2. Device information

+ Add device

No.	Device name	Model name	Device no.	Date registered	
1	Smart A/C(7825AD101DEE)	2012 Smart Air Conditioner	7825AD101DEE	25/06/2012	[Delete] [Modify] [User]

The screen may not be displayed properly depending on the web browser. If a broken screen is displayed, update the web browser to the latest version.

SAMSUNG Terms and condition | Privacy policy | Disclaimer
Copyright ©2011 Samsung Electronics Co., Ltd. All Rights Reserved.

8. Po zarejestrowaniu klimatyzatora zostanie on umieszczony na liście urządzeń.



UWAGA

- Przed wymianą modułu Wi-Fi należy zapoznać się z instrukcjami znajdującymi się powyżej, zaczynając od pierwszego kroku.

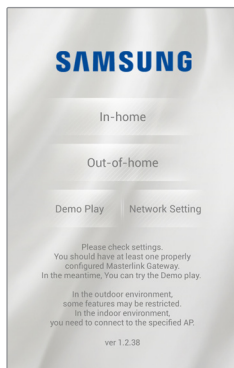




Obsługa aplikacji Smart A/C

- ▶ Użytkownicy smartfonów z systemem Android mogą pobrać aplikację Smart A/C z aplikacji Android Market (Google Play Store) lub Samsung Apps, wyszukując frazę „Smart Air Conditioner”.
- ▶ Użytkownicy iPhone mogą pobrać aplikację Smart A/C szukając w Apple Store 'Smart Air Conditioner'.

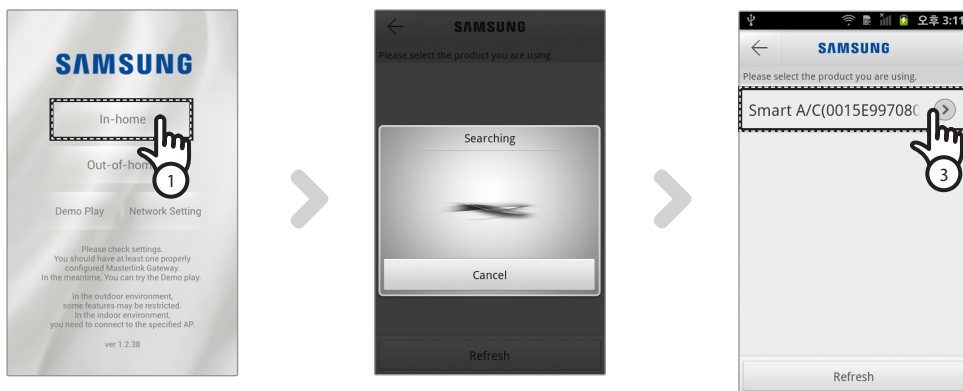
Ekran główny



In-home (W domu)	Sterowanie klimatyzatorem w domu.
Out-of-home (Poza domem)	Sterowanie klimatyzatorem poza domem.
Demo Play (Prezentacja)	Umożliwia wypróbowanie funkcji aplikacji Smart A/C.
Network Setting (Ustawienia sieciowe)	Konfiguracja sieci klimatyzatora.

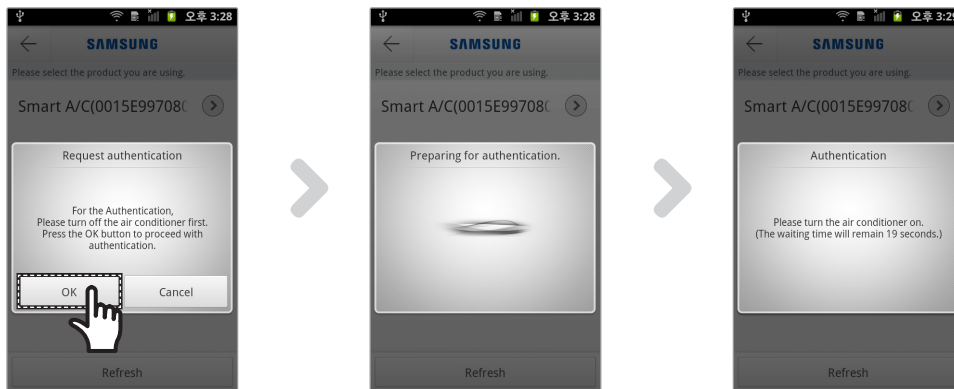
Otwieranie menu In-home (W domu)

- ▶ Używanie w domu aplikacji Smart APP zamiast pilota.



1. Naciśnij na ekranie głównym kartę [In-home] (W domu).
2. Znajdź klimatyzator.
 - Jeżeli klimatyzator nie został odnaleziony, naciśnij przycisk [Refresh] (Odśwież), aby wyszukać go ponownie.
3. Wybierz żądany klimatyzator.





4. Przed uzyskaniem dostępu do klimatyzatora podczas pierwszy należy dokonać uwierzytelnienia.
Po wyświetleniu okna uwierzytelnienia w ciągu 20 sekund włącz klimatyzator.
Po uwierzytelnieniu możesz zalogować się do klimatyzatora.

Sterowanie klimatyzatorem

- Zapoznaj się z funkcjami kontrolnymi klimatyzatora na ekranie sterowania klimatyzatorem.



Mode (Tryb)	Konfiguracja podstawowego działania klimatyzatora.
Option (Opcja)	Konfiguracja dodatkowych funkcji klimatyzatora.
Timer (Zegar)	Włączanie i wyłączanie funkcji zegara w klimatyzatorze.
Settings (Ustawienia)	Konfiguracja nazwy sieci klimatyzatora.

- Skonfiguruj tryb pracy klimatyzatora, naciskając kartę [Mode] (Tryb).



①	WŁĄCZENIE/WYŁĄCZENIE zasilania	Włączenie lub wyłączenie klimatyzatora.
②	Tryb	Wybór trybu Auto (Automatyczny), Cool (Chłodzenie), Dry (Osuszanie), Fan (Wentylator) lub Heat (Ogrzewanie).
③	Temperatura docelowa	Wybór docelowej temperatury.
④	Aktualna temperatura	Wyświetla aktualną temperaturę w pomieszczeniu.

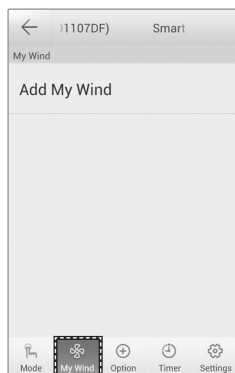




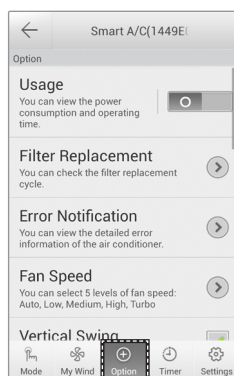
Obsługa aplikacji Smart A/C

Konfiguracja dodatkowych funkcji klimatyzatora

- ▶ Możesz sterować dodatkowymi funkcjami klimatyzatora.
- ▶ Dostępność funkcji dodatkowych zależy od funkcji klimatyzatora.
- ▶ Funkcje My Wind, Usage, Filter Replacement, Error Notification oraz Color Of Wind można obsługiwać tylko z pomocą aplikacji. Aby używać tych funkcji, należy nawiązać połączenie Wi-Fi i uruchomić aplikację.



1. Użytkownik zapisuje funkcję.
Obsługa klimatyzatora jest prosta.

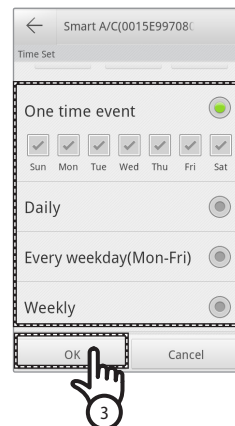
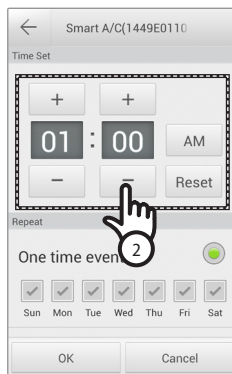
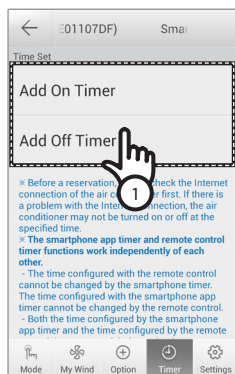


1. Wybierz kartę [Option] (Opcja) dostępną w dolnej części ekranu.
2. Wybierz tryb pracy lub potrzebne funkcje dodatkowe.



• Szczegółowe informacje dotyczące poszczególnych funkcji znajdują się w instrukcji obsługi każdego klimatyzatora.

Funkcja ustawień zegara



1. Po wybraniu karty [Timer] dostępnej w dolnej części ekranu naciśnij zakładkę [On Timer] (Timer wł.) lub [Off Timer] (Timer wył.).
 - Gdy chcesz ustawić czas włączenia urządzenia, wybierz kartę [On Timer] (Timer wł.). Gdy chcesz ustawić czas wyłączenia urządzenia, wybierz kartę [Off Timer] (Timer wył.).
2. Naciskając przyciski [+], [-] lub [AM], [PM], można ustawić czas włączenia lub wyłączenia urządzenia.





3. Po skonfigurowaniu programu cyklicznego wybierz kartę [OK].

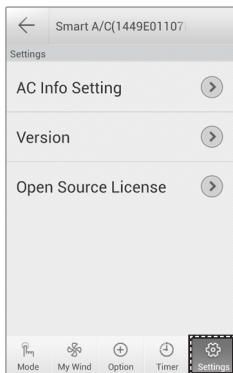


UWAGA

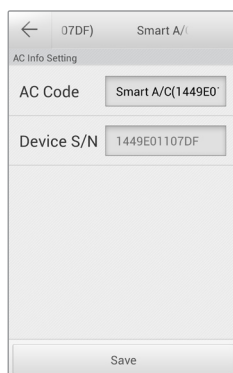
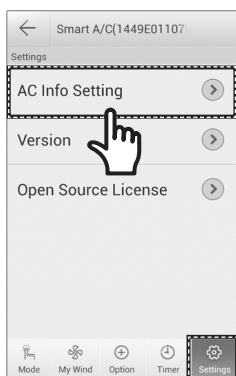
- Timer wyłączenia urządzenia nie może być taki sam, co Timer wyłączenia.

Konfiguracja danych klimatyzatora

- Zmiana informacji o klimatyzatorze lub wyświetlenie informacji o wersji aplikacji lub licencji Open Source jest możliwa w karcie [Settings] (Ustawienia).



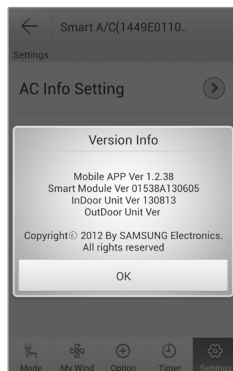
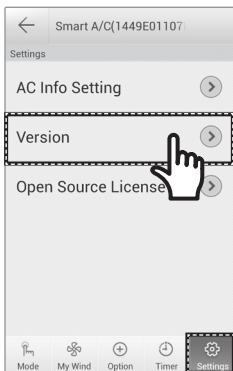
- Aby ustawić nazwę klimatyzatora, wybierz kartę [AC Info Setting] (Konfiguracja danych klimatyzatora).





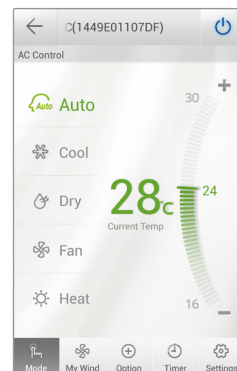
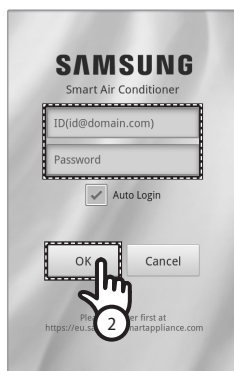
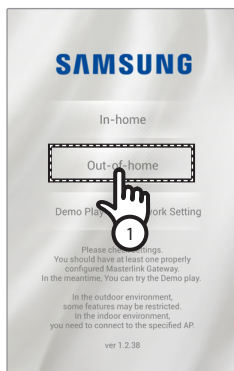
Obsługa aplikacji Smart A/C

- Aby sprawdzić wersję aplikacji, wybierz kartę [Version] (Wersja).



Otwieranie menu Out-of-home (Poza domem)

1. Wybierz kartę [Out-of-home] (Poza domem).
2. Wprowadź identyfikator i hasło serwisu do Samsung Smart Appliance, a następnie dotknij przycisk [OK].
3. Sterowanie klimatyzatorem poza domem.
 - Menu Out-of-home (Poza domem) jest obsługiwane tak samo, jak In-home (W domu; patrz str. 12.)



UWAGA

- Aby korzystać z menu Out-of-home (Poza domem), trzeba się zalogować. Podaj identyfikator i hasło użyte podczas rejestracji w serwisie internetowym. Jeżeli nie należysz do serwisu, dołącz do niego i zarejestruj klimatyzator pod adresem <http://www.samsungsmartappliance.com>.
- Podczas obsługi klimatyzatora z menu Out-of-home (Poza domem), nie można korzystać z jego dodatkowych funkcji.





Rozwiązywanie problemów

Przed skontaktowaniem się z centrum serwisowym zapoznaj się z poniższą tabelą.

Punkt kontroli		Rozwiązanie
Aplikacja Smart A/C nie może odnaleźć klimatyzatora.	Sprawdź, czy funkcja Wi-Fi w smartfonie jest włączona.	Aktywuj łączność Wi-Fi w smartfonie.
	Sprawdź, czy smartfon i klimatyzator nie są połączone z różnymi routerami bezprzewodowymi	Smartfon i klimatyzator muszą być połączone z tym samym routerem bezprzewodowym.
	Sprawdź, czy kontrolka Wi-Fi () na wyświetlaczu jest włączona.	Sprawdź, czy klimatyzator jest prawidłowo połączony z routerem bezprzewodowym.
Smartfon jest prawidłowo połączony z klimatyzatorem, ale nie działa.		Uruchom ponownie aplikację Smart A/C lub ponów nawiązywanie połączenia między smartfonem a routerem bezprzewodowym.
Po wybraniu w aplikacji Smart A/C funkcji In-home (W domu) w wynikach wyszukiwania pojawia się wiele urządzeń.		Wybierz pozycję o tym samym numerze urządzenia, co numer używanego klimatyzatora.
Nie mam identyfikatora i hasła logowania do funkcji Out-of-home (Poza domem) aplikacji Smart A/C.		Dołącz do serwisu Samsung Smart Appliance (http://www.samsungsmartappliance.com) i zarejestruj klimatyzator.
Funkcja Out-of-home (Poza domem) aplikacji Smart A/C nie działa.	Sprawdź, czy kontrolka Wi-Fi () na wyświetlaczu jest włączona.	Sprawdź, czy klimatyzator jest prawidłowo połączony z routerem bezprzewodowym.
	Sprawdź, czy kontrolka Wi-Fi () na wyświetlaczu miga co 0,5 s.	Sprawdź, czy router bezprzewodowy jest prawidłowo połączony z Internetem.



Open Source Announcement

Open Source Announcement

The software included in this product contains copyrighted software that is licensed under the GPL/LGPL. You may obtain the complete Corresponding Source code from us for a period of three years after our last shipment of this product by sending email to:

oss.request@samsung.com

If you want to obtain the complete Corresponding Source code in the physical medium such as CD-ROM, the cost of physically performing source distribution may be charged. This offer is valid to anyone in receipt of this information.

GPL Software :

Linux kernel, BusyBox, Bootloader, U-boot

LGPL Software :

Mini-XML

GNU GENERAL PUBLIC LICENSE

Version 2, June 1991

Copyright (C) 1989, 1991 Free Software Foundation, Inc.
51 Franklin Street, Fifth Floor, Boston, MA 02110-1301, USA

Everyone is permitted to copy and distribute verbatim copies of this license document, but changing it is not allowed.

Preamble

The licenses for most software are designed to take away your freedom to share and change it. By contrast, the GNU General Public License is intended to guarantee your freedom to share and change free software--to make sure the software is free for all its users. This General Public License applies to most of the Free Software Foundation's software and to any other program whose authors commit to using it. (Some other Free Software Foundation software is covered by the GNU Lesser General Public License instead.) You can apply it to your programs, too.

When we speak of free software, we are referring to freedom, not price. Our General Public Licenses are designed to make sure that you have the freedom to distribute copies of free software (and charge for this service if you wish), that you receive source code or can get it if you want it, that you can change the software or use pieces of it in new free programs; and that you know you can do these things.

To protect your rights, we need to make restrictions that forbid anyone to deny you these rights or to ask you to surrender the rights. These restrictions translate to certain responsibilities for you if you distribute copies of the software, or if you modify it.

For example, if you distribute copies of such a program, whether gratis or for a fee, you must give the recipients all the rights that you have. You must make sure that they, too, receive or can get the source code. And you must show them these terms so they know their rights.

We protect your rights with two steps: (1) copyright the software, and (2) offer you this license which gives you legal permission to copy, distribute and/or modify the software.

Also, for each author's protection and ours, we want to make certain that everyone understands that there is no warranty for this free software. If the software is modified by someone else and passed on, we want its recipients to know that what they have is not the original, so that any problems introduced by others will not reflect on the original authors' reputations.

Finally, any free program is threatened constantly by software patents. We wish to avoid the danger that redistributors of a free program will individually obtain patent licenses, in effect making the program proprietary. To prevent this, we have made it clear that any patent must be licensed for everyone's free use or not licensed at all.

The precise terms and conditions for copying, distribution and modification follow.

TERMS AND CONDITIONS FOR COPYING, DISTRIBUTION AND MODIFICATION

0. This License applies to any program or other work which contains a notice placed by the copyright holder saying it may be distributed under the terms of this General Public License. The "Program", below, refers to any such program or work, and a "work based on the Program" means either the Program or any derivative work under copyright law: that is to say, a work containing the Program or a portion of it, either verbatim or with modifications and/or translated into another language. (Hereinafter, translation is included without limitation in the term "modification".) Each licensee is addressed as "you".

Activities other than copying, distribution and modification are not covered by this License; they are outside its scope. The act of running the Program is not restricted, and the output from the Program is covered only if its contents constitute a work based on the Program (independent of having been made by running the Program). Whether that is true depends on what the Program does.

1. You may copy and distribute verbatim copies of the Program's source code as you receive it, in any medium, provided that you conspicuously and appropriately publish on each copy an appropriate copyright notice and disclaimer of warranty; keep intact all the notices that refer to this License and to the absence of any warranty; and give any other recipients of the Program a copy of this License along with the Program.

You may charge a fee for the physical act of transferring a copy, and you may at your option offer warranty protection in exchange for a fee.

2. You may modify your copy or copies of the Program or any portion of it, thus forming a work based on the Program, and copy and distribute such modifications or work under the terms of Section 1 above, provided that you also meet all of these conditions:

- a) You must cause the modified files to carry prominent notices stating that you changed the files and the date of any change.
- b) You must cause any work that you distribute or publish,





that in whole or in part contains or is derived from the Program or any part thereof, to be licensed as a whole at no charge to all third parties under the terms of this License.

c) If the modified program normally reads commands interactively when run, you must cause it, when started running for such interactive use in the most ordinary way, to print or display an announcement including an appropriate copyright notice and a notice that there is no warranty (or else, saying that you provide a warranty) and that users may redistribute the program under these conditions, and telling the user how to view a copy of this License. (Exception: if the Program itself is interactive but does not normally print such an announcement, your work based on the Program is not required to print an announcement.)

These requirements apply to the modified work as a whole. If identifiable sections of that work are not derived from the Program, and can be reasonably considered independent and separate works in themselves, then this License, and its terms, do not apply to those sections when you distribute them as separate works. But when you distribute the same sections as part of a whole which is a work based on the Program, the distribution of the whole must be on the terms of this License, whose permissions for other licensees extend to the entire whole, and thus to each and every part regardless of who wrote it.

Thus, it is not the intent of this section to claim rights or contest your rights to work written entirely by you; rather, the intent is to exercise the right to control the distribution of derivative or collective works based on the Program.

In addition, mere aggregation of another work not based on the Program with the Program (or with a work based on the Program) on a volume of a storage or distribution medium does not bring the other work under the scope of this License.

3. You may copy and distribute the Program (or a work based on it, under Section 2) in object code or executable form under the terms of Sections 1 and 2 above provided that you also do one of the following:

- a)** Accompany it with the complete corresponding machine-readable source code, which must be distributed under the terms of Sections 1 and 2 above on a medium customarily used for software interchange; or,
- b)** Accompany it with a written offer, valid for at least three years, to give any third party, for a charge no more than your cost of physically performing source distribution, a complete machine-readable copy of the corresponding source code, to be distributed under the terms of Sections 1 and 2 above on a medium customarily used for software interchange; or,
- c)** Accompany it with the information you received as to the offer to distribute corresponding source code. (This alternative is allowed only for noncommercial distribution and only if you received the program in object code or executable form with such an offer, in accord with Subsection b above.)

The source code for a work means the preferred form of the work for making modifications to it. For an executable work, complete source code means all the source code for all modules it contains, plus any associated interface definition files, plus the scripts used to control compilation and installation of the executable. However, as a special exception, the source code distributed need not include anything that is normally distributed (in either source or binary form) with the major components (compiler,

kernel, and so on) of the operating system on which the executable runs, unless that component itself accompanies the executable.

If distribution of executable or object code is made by offering access to copy from a designated place, then offering equivalent access to copy the source code from the same place counts as distribution of the source code, even though third parties are not compelled to copy the source along with the object code.

4. You may not copy, modify, sublicense, or distribute the Program except as expressly provided under this License. Any attempt otherwise to copy, modify, sublicense or distribute the Program is void, and will automatically terminate your rights under this License. However, parties who have received copies, or rights, from you under this License will not have their licenses terminated so long as such parties remain in full compliance.

5. You are not required to accept this License, since you have not signed it. However, nothing else grants you permission to modify or distribute the Program or its derivative works. These actions are prohibited by law if you do not accept this License. Therefore, by modifying or distributing the Program (or any work based on the Program), you indicate your acceptance of this License to do so, and all its terms and conditions for copying, distributing or modifying the Program or works based on it.

6. Each time you redistribute the Program (or any work based on the Program), the recipient automatically receives a license from the original licensor to copy, distribute or modify the Program subject to these terms and conditions. You may not impose any further restrictions on the recipients' exercise of the rights granted herein. You are not responsible for enforcing compliance by third parties to this License.

7. If, as a consequence of a court judgment or allegation of patent infringement or for any other reason (not limited to patent issues), conditions are imposed on you (whether by court order, agreement or otherwise) that contradict the conditions of this License, they do not excuse you from the conditions of this License. If you cannot distribute so as to satisfy simultaneously your obligations under this License and any other pertinent obligations, then as a consequence you may not distribute the Program at all. For example, if a patent license would not permit royalty-free redistribution of the Program by all those who receive copies directly or indirectly through you, then the only way you could satisfy both it and this License would be to refrain entirely from distribution of the Program.

If any portion of this section is held invalid or unenforceable under any particular circumstance, the balance of the section is intended to apply and the section as a whole is intended to apply in other circumstances.

It is not the purpose of this section to induce you to infringe any patents or other property right claims or to contest validity of any such claims; this section has the sole purpose of protecting the integrity of the free software distribution system, which is implemented by public license practices. Many people have made generous contributions to the wide range of software distributed through that system in reliance on consistent application of that system; it is up to the author/donor to decide if he or she is willing to distribute software through any other system and a licensee cannot impose that choice.



Open Source Announcement

This section is intended to make thoroughly clear what is believed to be a consequence of the rest of this License.

8. If the distribution and/or use of the Program is restricted in certain countries either by patents or by copyrighted interfaces, the original copyright holder who places the Program under this License may add an explicit geographical distribution limitation excluding those countries, so that distribution is permitted only in or among countries not thus excluded. In such case, this License incorporates the limitation as if written in the body of this License.

9. The Free Software Foundation may publish revised and/or new versions of the General Public License from time to time. Such new versions will be similar in spirit to the present version, but may differ in detail to address new problems or concerns.

Each version is given a distinguishing version number. If the Program specifies a version number of this License which applies to it and "any later version", you have the option of following the terms and conditions either of that version or of any later version published by the Free Software Foundation. If the Program does not specify a version number of this License, you may choose any version ever published by the Free Software Foundation.

10. If you wish to incorporate parts of the Program into other free programs whose distribution conditions are different, write to the author to ask for permission. For software which is copyrighted by the Free Software Foundation, write to the Free Software Foundation; we sometimes make exceptions for this. Our decision will be guided by the two goals of preserving the free status of all derivatives of our free software and of promoting the sharing and reuse of software generally.

NO WARRANTY

11. BECAUSE THE PROGRAM IS LICENSED FREE OF CHARGE, THERE IS NO WARRANTY FOR THE PROGRAM, TO THE EXTENT PERMITTED BY APPLICABLE LAW. EXCEPT WHEN OTHERWISE STATED IN WRITING THE COPYRIGHT HOLDERS AND/OR OTHER PARTIES PROVIDE THE PROGRAM "AS IS" WITHOUT WARRANTY OF ANY KIND, EITHER EXPRESSED OR IMPLIED, INCLUDING, BUT NOT LIMITED TO, THE IMPLIED WARRANTIES OF MERCHANTABILITY AND FITNESS FOR A PARTICULAR PURPOSE. THE ENTIRE RISK AS TO THE QUALITY AND PERFORMANCE OF THE PROGRAM IS WITH YOU. SHOULD THE PROGRAM PROVE DEFECTIVE, YOU ASSUME THE COST OF ALL NECESSARY SERVICING, REPAIR OR CORRECTION.

12. IN NO EVENT UNLESS REQUIRED BY APPLICABLE LAW OR AGREED TO IN WRITING WILL ANY COPYRIGHT HOLDER, OR ANY OTHER PARTY WHO MAY MODIFY AND/OR REDISTRIBUTE THE PROGRAM AS PERMITTED ABOVE, BE LIABLE TO YOU FOR DAMAGES, INCLUDING ANY GENERAL, SPECIAL, INCIDENTAL OR CONSEQUENTIAL DAMAGES ARISING OUT OF THE USE OR INABILITY TO USE THE PROGRAM (INCLUDING BUT NOT LIMITED TO LOSS OF DATA OR DATA BEING RENDERED INACCURATE OR LOSSES SUSTAINED BY YOU OR THIRD PARTIES OR A FAILURE OF THE PROGRAM TO OPERATE WITH ANY OTHER PROGRAMS), EVEN IF SUCH HOLDER OR OTHER PARTY HAS BEEN ADVISED OF THE POSSIBILITY OF SUCH DAMAGES.

END OF TERMS AND CONDITIONS

How to Apply These Terms to Your New Programs

If you develop a new program, and you want it to be of the greatest possible use to the public, the best way to achieve this is to make it free software which everyone can redistribute and change under these terms.

To do so, attach the following notices to the program. It is safest to attach them to the start of each source file to most effectively convey the exclusion of warranty; and each file should have at least the "copyright" line and a pointer to where the full notice is found.

one line to give the program's name and an idea of what it does.
Copyright (C) yyyy name of author

This program is free software; you can redistribute it and/or modify it under the terms of the GNU General Public License as published by the Free Software Foundation; either version 2 of the License, or (at your option) any later version.

This program is distributed in the hope that it will be useful, but WITHOUT ANY WARRANTY; without even the implied warranty of MERCHANTABILITY or FITNESS FOR A PARTICULAR PURPOSE. See the GNU General Public License for more details.

You should have received a copy of the GNU General Public License along with this program; if not, write to the Free Software Foundation, Inc., 51 Franklin Street, Fifth Floor, Boston, MA 02110-1301, USA.

Also add information on how to contact you by electronic and paper mail.

If the program is interactive, make it output a short notice like this when it starts in an interactive mode:

Gnomovision version 69, Copyright (C) year name of author
Gnomovision comes with ABSOLUTELY NO WARRANTY; for details type 'show w'. This is free software, and you are welcome to redistribute it under certain conditions; type 'show c' for details.

The hypothetical commands 'show w' and 'show c' should show the appropriate parts of the General Public License. Of course, the commands you use may be called something other than 'show w' and 'show c'; they could even be mouse-clicks or menu items—whatever suits your program.

You should also get your employer (if you work as a programmer) or your school, if any, to sign a "copyright disclaimer" for the program, if necessary. Here is a sample; alter the names:

Yoyodyne, Inc., hereby disclaims all copyright interest in the program 'Gnomovision' (which makes passes at compilers) written by James Hacker.

signature of Ty Coon, 1 April 1989
Ty Coon, President of Vice

This General Public License does not permit incorporating your program into proprietary programs. If your program is a subroutine library, you may consider it more useful to permit linking proprietary applications with the library. If this is what you want to do, use the [GNU Lesser General Public License](#) instead of this License.



GNU LESSER GENERAL PUBLIC LICENSE

Version 2.1, February 1999

Copyright (C) 1991, 1999 Free Software Foundation, Inc.
51 Franklin Street, Fifth Floor, Boston, MA 02110-1301 USA
Everyone is permitted to copy and distribute verbatim copies of
this license document, but changing it is not allowed.

[This is the first released version of the Lesser GPL. It also counts
as the successor of the GNU Library Public License, version 2,
hence the version number 2.1.]

Preamble

The licenses for most software are designed to take away your
freedom to share and change it. By contrast, the GNU General
Public Licenses are intended to guarantee your freedom to share
and change free software--to make sure the software is free for
all its users.

This license, the Lesser General Public License, applies to some
specially designated software packages--typically libraries--of
the Free Software Foundation and other authors who decide to
use it. You can use it too, but we suggest you first think carefully
about whether this license or the ordinary General Public License
is the better strategy to use in any particular case, based on the
explanations below.

When we speak of free software, we are referring to freedom
of use, not price. Our General Public Licenses are designed to
make sure that you have the freedom to distribute copies of free
software (and charge for this service if you wish); that you receive
source code or can get it if you want it; that you can change the
software and use pieces of it in new free programs; and that you
are informed that you can do these things.

To protect your rights, we need to make restrictions that forbid
distributors to deny you these rights or to ask you to surrender
these rights. These restrictions translate to certain responsibilities
for you if you distribute copies of the library or if you modify it.

For example, if you distribute copies of the library, whether gratis
or for a fee, you must give the recipients all the rights that we
gave you. You must make sure that they, too, receive or can get
the source code. If you link other code with the library, you must
provide complete object files to the recipients, so that they can
relink them with the library after making changes to the library
and recompiling it. And you must show them these terms so they
know their rights.

We protect your rights with a two-step method: (1) we copyright
the library, and (2) we offer you this license, which gives you
legal permission to copy, distribute and/or modify the library.

To protect each distributor, we want to make it very clear that
there is no warranty for the free library. Also, if the library is
modified by someone else and passed on, the recipients should
know that what they have is not the original version, so that the
original author's reputation will not be affected by problems that
might be introduced by others.

Finally, software patents pose a constant threat to the existence
of any free program. We wish to make sure that a company
cannot effectively restrict the users of a free program by
obtaining a restrictive license from a patent holder. Therefore,
we insist that any patent license obtained for a version of the
library must be consistent with the full freedom of use specified
in this license.

Most GNU software, including some libraries, is covered by the
ordinary GNU General Public License. This license, the GNU Lesser
General Public License, applies to certain designated libraries,
and is quite different from the ordinary General Public License.
We use this license for certain libraries in order to permit linking
those libraries into non-free programs.

When a program is linked with a library, whether statically or
using a shared library, the combination of the two is legally
speaking a combined work, a derivative of the original library.
The ordinary General Public License therefore permits such
linking only if the entire combination fits its criteria of freedom.
The Lesser General Public License permits more lax criteria for
linking other code with the library.

We call this license the "Lesser" General Public License because
it does Less to protect the user's freedom than the ordinary
General Public License. It also provides other free software
developers Less of an advantage over competing non-free
programs. These disadvantages are the reason we use the
ordinary General Public License for many libraries. However,
the Lesser license provides advantages in certain special
circumstances.

For example, on rare occasions, there may be a special need to
encourage the widest possible use of a certain library, so that it
becomes a de-facto standard. To achieve this, non-free programs
must be allowed to use the library. A more frequent case is that
a free library does the same job as widely used non-free libraries.
In this case, there is little to gain by limiting the free library to
free software only, so we use the Lesser General Public License.

In other cases, permission to use a particular library in non-free
programs enables a greater number of people to use a large
body of free software. For example, permission to use the GNU C
Library in non-free programs enables many more people to use
the whole GNU operating system, as well as its variant, the GNU/
Linux operating system.

Although the Lesser General Public License is Less protective of
the users' freedom, it does ensure that the user of a program that
is linked with the Library has the freedom and the wherewithal
to run that program using a modified version of the Library.

The precise terms and conditions for copying, distribution
and modification follow. Pay close attention to the difference
between a "work based on the library" and a "work that uses
the library". The former contains code derived from the library,
whereas the latter must be combined with the library in order
to run.

TERMS AND CONDITIONS FOR COPYING, DISTRIBUTION AND MODIFICATION

0. This License Agreement applies to any software library or
other program which contains a notice placed by the copyright
holder or other authorized party saying it may be distributed
under the terms of this Lesser General Public License (also called
"this License"). Each licensee is addressed as "you".

A "library" means a collection of software functions and/or
data prepared so as to be conveniently linked with application
programs (which use some of those functions and data) to form
executables.



Open Source Announcement

The "Library", below, refers to any such software library or work which has been distributed under these terms. A "work based on the Library" means either the Library or any derivative work under copyright law: that is to say, a work containing the Library or a portion of it, either verbatim or with modifications and/or translated straightforwardly into another language. (Hereinafter, translation is included without limitation in the term "modification".)

"Source code" for a work means the preferred form of the work for making modifications to it. For a library, complete source code means all the source code for all modules it contains, plus any associated interface definition files, plus the scripts used to control compilation and installation of the library.

Activities other than copying, distribution and modification are not covered by this License; they are outside its scope. The act of running a program using the Library is not restricted, and output from such a program is covered only if its contents constitute a work based on the Library (independent of the use of the Library in a tool for writing it). Whether that is true depends on what the Library does and what the program that uses the Library does.

1. You may copy and distribute verbatim copies of the Library's complete source code as you receive it, in any medium, provided that you conspicuously and appropriately publish on each copy an appropriate copyright notice and disclaimer of warranty; keep intact all the notices that refer to this License and to the absence of any warranty; and distribute a copy of this License along with the Library.

You may charge a fee for the physical act of transferring a copy, and you may at your option offer warranty protection in exchange for a fee.

2. You may modify your copy or copies of the Library or any portion of it, thus forming a work based on the Library, and copy and distribute such modifications or work under the terms of Section 1 above, provided that you also meet all of these conditions:

- a)** The modified work must itself be a software library.
- b)** You must cause the files modified to carry prominent notices stating that you changed the files and the date of any change.
- c)** You must cause the whole of the work to be licensed at no charge to all third parties under the terms of this License.
- d)** If a facility in the modified Library refers to a function or a table of data to be supplied by an application program that uses the facility, other than as an argument passed when the facility is invoked, then you must make a good faith effort to ensure that, in the event an application does not supply such function or table, the facility still operates, and performs whatever part of its purpose remains meaningful.

(For example, a function in a library to compute square roots has a purpose that is entirely well-defined independent of the application. Therefore, Subsection 2d requires that any application-supplied function or table used by this function must be optional: if the application does not supply it, the square root function must still compute square roots.)

These requirements apply to the modified work as a whole. If identifiable sections of that work are not derived from the Library, and can be reasonably considered independent and

separate works in themselves, then this License, and its terms, do not apply to those sections when you distribute them as separate works. But when you distribute the same sections as part of a whole which is a work based on the Library, the distribution of the whole must be on the terms of this License, whose permissions for other licensees extend to the entire whole, and thus to each and every part regardless of who wrote it.

Thus, it is not the intent of this section to claim rights or contest your rights to work written entirely by you; rather, the intent is to exercise the right to control the distribution of derivative or collective works based on the Library.

In addition, mere aggregation of another work not based on the Library with the Library (or with a work based on the Library) on a volume of a storage or distribution medium does not bring the other work under the scope of this License.

3. You may opt to apply the terms of the ordinary GNU General Public License instead of this License to a given copy of the Library. To do this, you must alter all the notices that refer to this License, so that they refer to the ordinary GNU General Public License, version 2, instead of to this License. (If a newer version than version 2 of the ordinary GNU General Public License has appeared, then you can specify that version instead if you wish.) Do not make any other change in these notices.

Once this change is made in a given copy, it is irreversible for that copy, so the ordinary GNU General Public License applies to all subsequent copies and derivative works made from that copy.

This option is useful when you wish to copy part of the code of the Library into a program that is not a library.

4. You may copy and distribute the Library (or a portion or derivative of it, under Section 2) in object code or executable form under the terms of Sections 1 and 2 above provided that you accompany it with the complete corresponding machine-readable source code, which must be distributed under the terms of Sections 1 and 2 above on a medium customarily used for software interchange.

If distribution of object code is made by offering access to copy from a designated place, then offering equivalent access to copy the source code from the same place satisfies the requirement to distribute the source code, even though third parties are not compelled to copy the source along with the object code.

5. A program that contains no derivative of any portion of the Library, but is designed to work with the Library by being compiled or linked with it, is called a "work that uses the Library". Such a work, in isolation, is not a derivative work of the Library, and therefore falls outside the scope of this License.

However, linking a "work that uses the Library" with the Library creates an executable that is a derivative of the Library (because it contains portions of the Library), rather than a "work that uses the library". The executable is therefore covered by this License. Section 6 states terms for distribution of such executables.

When a "work that uses the Library" uses material from a header file that is part of the Library, the object code for the work may be a derivative work of the Library even though the source code is not. Whether this is true is especially significant if the work can be linked without the Library, or if the work is itself a library. The threshold for this to be true is not precisely defined by law.



If such an object file uses only numerical parameters, data structure layouts and accessors, and small macros and small inline functions (ten lines or less in length), then the use of the object file is unrestricted, regardless of whether it is legally a derivative work. (Executables containing this object code plus portions of the Library will still fall under Section 6.)

Otherwise, if the work is a derivative of the Library, you may distribute the object code for the work under the terms of Section 6. Any executables containing that work also fall under Section 6, whether or not they are linked directly with the Library itself.

6. As an exception to the Sections above, you may also combine or link a "work that uses the Library" with the Library to produce a work containing portions of the Library, and distribute that work under terms of your choice, provided that the terms permit modification of the work for the customer's own use and reverse engineering for debugging such modifications.

You must give prominent notice with each copy of the work that the Library is used in it and that the Library and its use are covered by this License. You must supply a copy of this License. If the work during execution displays copyright notices, you must include the copyright notice for the Library among them, as well as a reference directing the user to the copy of this License. Also, you must do one of these things:

- a)** Accompany the work with the complete corresponding machine-readable source code for the Library including whatever changes were used in the work (which must be distributed under Sections 1 and 2 above); and, if the work is an executable linked with the Library, with the complete machine-readable "work that uses the Library", as object code and/or source code, so that the user can modify the Library and then relink to produce a modified executable containing the modified Library. (It is understood that the user who changes the contents of definitions files in the Library will not necessarily be able to recompile the application to use the modified definitions.)
- b)** Use a suitable shared library mechanism for linking with the Library. A suitable mechanism is one that (1) uses at run time a copy of the library already present on the user's computer system, rather than copying library functions into the executable, and (2) will operate properly with a modified version of the library, if the user installs one, as long as the modified version is interface-compatible with the version that the work was made with.
- c)** Accompany the work with a written offer, valid for at least three years, to give the same user the materials specified in Subsection 6a, above, for a charge no more than the cost of performing this distribution.
- d)** If distribution of the work is made by offering access to copy from a designated place, offer equivalent access to copy the above specified materials from the same place.
- e)** Verify that the user has already received a copy of these materials or that you have already sent this user a copy.

For an executable, the required form of the "work that uses the Library" must include any data and utility programs needed for reproducing the executable from it. However, as a special exception, the materials to be distributed need not include anything that is normally distributed (in either source or binary form) with the major components (compiler, kernel, and so on) of the operating system on which the executable runs, unless that component itself accompanies the executable.

It may happen that this requirement contradicts the license restrictions of other proprietary libraries that do not normally accompany the operating system. Such a contradiction means you cannot use both them and the Library together in an executable that you distribute.

7. You may place library facilities that are a work based on the Library side-by-side in a single library together with other library facilities not covered by this License, and distribute such a combined library, provided that the separate distribution of the work based on the Library and of the other library facilities is otherwise permitted, and provided that you do these two things:

- a)** Accompany the combined library with a copy of the same work based on the Library, uncombined with any other library facilities. This must be distributed under the terms of the Sections above.
- b)** Give prominent notice with the combined library of the fact that part of it is a work based on the Library, and explaining where to find the accompanying uncombined form of the same work.

8. You may not copy, modify, sublicense, link with, or distribute the Library except as expressly provided under this License. Any attempt otherwise to copy, modify, sublicense, link with, or distribute the Library is void, and will automatically terminate your rights under this License. However, parties who have received copies, or rights, from you under this License will not have their licenses terminated so long as such parties remain in full compliance.

9. You may not copy, modify, sublicense, link with, or distribute the Library except as expressly provided under this License. Any attempt otherwise to copy, modify, sublicense, link with, or distribute the Library is void, and will automatically terminate your rights under this License. However, parties who have received copies, or rights, from you under this License will not have their licenses terminated so long as such parties remain in full compliance.

10. Each time you redistribute the Library (or any work based on the Library), the recipient automatically receives a license from the original licensor to copy, distribute, link with or modify the Library subject to these terms and conditions. You may not impose any further restrictions on the recipients' exercise of the rights granted herein. You are not responsible for enforcing compliance by third parties with this License.

11. If, as a consequence of a court judgment or allegation of patent infringement or for any other reason (not limited to patent issues), conditions are imposed on you (whether by court order, agreement or otherwise) that contradict the conditions of this License, they do not excuse you from the conditions of this License. If you cannot distribute so as to satisfy simultaneously your obligations under this License and any other pertinent obligations, then as a consequence you may not distribute the Library at all. For example, if a patent license would not permit royalty-free redistribution of the Library by all those who receive copies directly or indirectly through you, then the only way you could satisfy both it and this License would be to refrain entirely from distribution of the Library.

If any portion of this section is held invalid or unenforceable under any particular circumstance, the balance of the section is intended to apply, and the section as a whole is intended to apply in other circumstances.



Open Source Announcement

It is not the purpose of this section to induce you to infringe any patents or other property right claims or to contest validity of any such claims; this section has the sole purpose of protecting the integrity of the free software distribution system which is implemented by public license practices. Many people have made generous contributions to the wide range of software distributed through that system in reliance on consistent application of that system; it is up to the author/donor to decide if he or she is willing to distribute software through any other system and a licensee cannot impose that choice.

This section is intended to make thoroughly clear what is believed to be a consequence of the rest of this License.

12. If the distribution and/or use of the Library is restricted in certain countries either by patents or by copyrighted interfaces, the original copyright holder who places the Library under this License may add an explicit geographical distribution limitation excluding those countries, so that distribution is permitted only in or among countries not thus excluded. In such case, this License incorporates the limitation as if written in the body of this License.

13. The Free Software Foundation may publish revised and/or new versions of the Lesser General Public License from time to time. Such new versions will be similar in spirit to the present version, but may differ in detail to address new problems or concerns.

Each version is given a distinguishing version number. If the Library specifies a version number of this License which applies to it and "any later version", you have the option of following the terms and conditions either of that version or of any later version published by the Free Software Foundation. If the Library does not specify a license version number, you may choose any version ever published by the Free Software Foundation.

14. If you wish to incorporate parts of the Library into other free programs whose distribution conditions are incompatible with these, write to the author to ask for permission. For software which is copyrighted by the Free Software Foundation, write to the Free Software Foundation; we sometimes make exceptions for this. Our decision will be guided by the two goals of preserving the free status of all derivatives of our free software and of promoting the sharing and reuse of software generally.

NO WARRANTY

15. BECAUSE THE LIBRARY IS LICENSED FREE OF CHARGE, THERE IS NO WARRANTY FOR THE LIBRARY, TO THE EXTENT PERMITTED BY APPLICABLE LAW. EXCEPT WHEN OTHERWISE STATED IN WRITING THE COPYRIGHT HOLDERS AND/OR OTHER PARTIES PROVIDE THE LIBRARY "AS IS" WITHOUT WARRANTY OF ANY KIND, EITHER EXPRESSED OR IMPLIED, INCLUDING, BUT NOT LIMITED TO, THE IMPLIED WARRANTIES OF MERCHANTABILITY AND FITNESS FOR A PARTICULAR PURPOSE. THE ENTIRE RISK AS TO THE QUALITY AND PERFORMANCE OF THE LIBRARY IS WITH YOU. SHOULD THE LIBRARY PROVE DEFECTIVE, YOU ASSUME THE COST OF ALL NECESSARY SERVICING, REPAIR OR CORRECTION.

16. IN NO EVENT UNLESS REQUIRED BY APPLICABLE LAW OR AGREED TO IN WRITING WILL ANY COPYRIGHT HOLDER, OR ANY OTHER PARTY WHO MAY MODIFY AND/OR REDISTRIBUTE THE LIBRARY AS PERMITTED ABOVE, BE LIABLE TO YOU FOR DAMAGES, INCLUDING ANY GENERAL, SPECIAL, INCIDENTAL OR CONSEQUENTIAL DAMAGES ARISING OUT OF THE USE OR INABILITY TO USE THE LIBRARY (INCLUDING BUT NOT LIMITED TO LOSS OF DATA OR DATA BEING RENDERED INACCURATE OR

LOSSES SUSTAINED BY YOU OR THIRD PARTIES OR A FAILURE OF THE LIBRARY TO OPERATE WITH ANY OTHER SOFTWARE), EVEN IF SUCH HOLDER OR OTHER PARTY HAS BEEN ADVISED OF THE POSSIBILITY OF SUCH DAMAGES.

END OF TERMS AND CONDITIONS

How to Apply These Terms to Your New Libraries

If you develop a new library, and you want it to be of the greatest possible use to the public, we recommend making it free software that everyone can redistribute and change. You can do so by permitting redistribution under these terms (or, alternatively, under the terms of the ordinary General Public License).

To apply these terms, attach the following notices to the library. It is safest to attach them to the start of each source file to most effectively convey the exclusion of warranty; and each file should have at least the "copyright" line and a pointer to where the full notice is found.

one line to give the library's name and an idea of what it does.
Copyright (C) year name of author

This library is free software; you can redistribute it and/or modify it under the terms of the GNU Lesser General Public License as published by the Free Software Foundation; either version 2.1 of the License, or (at your option) any later version.

This library is distributed in the hope that it will be useful, but WITHOUT ANY WARRANTY; without even the implied warranty of MERCHANTABILITY or FITNESS FOR A PARTICULAR PURPOSE. See the GNU Lesser General Public License for more details.

You should have received a copy of the GNU Lesser General Public License along with this library; if not, write to the Free Software Foundation, Inc., 51 Franklin Street, Fifth Floor, Boston, MA 02110-1301 USA

Also add information on how to contact you by electronic and paper mail.

You should also get your employer (if you work as a programmer) or your school, if any, to sign a "copyright disclaimer" for the library, if necessary. Here is a sample; alter the names:

Yoyodyne, Inc., hereby disclaims all copyright interest in the library 'Frob' (a library for tweaking knobs) written by James Random Hacker.

signature of Ty Coon, 1 April 1990
Ty Coon, President of Vice

That's all there is to it!

OpenSSL

This product includes software developed by the OpenSSL Project for use in the OpenSSL Toolkit. (<http://www.openssl.org/>)
This product includes cryptographic software written by Eric Young (eay@cryptsoft.com)

LICENSE ISSUES

The OpenSSL toolkit stays under a dual license, i.e. both the conditions of the OpenSSL License and the original SSLeay license apply to the toolkit. See below for the actual license texts. Actually both licenses are BSD-style Open Source licenses. In case of any license issues related to OpenSSL please contact openssl-core@openssl.org.





OpenSSL License

Copyright (c) 1998-2008 The OpenSSL Project. All rights reserved.
Redistribution and use in source and binary forms, with or without
modification, are permitted provided that the following conditions are
met:

Redistributions of source code must retain the above copyright notice,
this list of conditions and the following disclaimer.

Redistributions in binary form must reproduce the above copyright
notice, this list of conditions and the following disclaimer in the
documentation and/or other materials provided with the distribution.
All advertising materials mentioning features or use of this software
must display the following acknowledgment:

"This product includes software developed by the OpenSSL Project for
use in the OpenSSL Toolkit. (<http://www.openssl.org/>)"

The names "OpenSSL Toolkit" and "OpenSSL Project" must not be used
to endorse or promote products derived from this software without
prior written permission. For written permission, please contact openssl-core@openssl.org.

Products derived from this software may not be called "OpenSSL" nor
may "OpenSSL" appear in their names without prior written permission
of the OpenSSL Project.

Redistributions of any form whatsoever must retain the following
acknowledgment:

"This product includes software developed by the OpenSSL Project for
use in the OpenSSL Toolkit (<http://www.openssl.org/>)"

THIS SOFTWARE IS PROVIDED BY THE OpenSSL PROJECT "AS IS" AND
ANY EXPRESSED OR IMPLIED WARRANTIES, INCLUDING, BUT NOT
LIMITED TO, THE IMPLIED WARRANTIES OF MERCHANTABILITY AND
FITNESS FOR A PARTICULAR PURPOSE ARE DISCLAIMED. IN NO EVENT
SHALL THE OpenSSL PROJECT OR ITS CONTRIBUTORS BE LIABLE
FOR ANY DIRECT, INDIRECT, INCIDENTAL, SPECIAL, EXEMPLARY, OR
CONSEQUENTIAL DAMAGES (INCLUDING, BUT NOT LIMITED TO,
PROCUREMENT OF SUBSTITUTE GOODS OR SERVICES; LOSS OF USE,
DATA, OR PROFITS; OR BUSINESS INTERRUPTION) HOWEVER CAUSED
AND ON ANY THEORY OF LIABILITY, WHETHER IN CONTRACT, STRICT
LIABILITY, OR TORT (INCLUDING NEGLIGENCE OR OTHERWISE) ARISING
IN ANY WAY OUT OF THE USE OF THIS SOFTWARE, EVEN IF ADVISED OF
THE POSSIBILITY OF SUCH DAMAGE.

=====

This product includes cryptographic software written by Eric Young
(eay@cryptsoft.com). This product includes software written by Tim
Hudson (tjh@cryptsoft.com).

Uthash

Copyright (c) 2005-2013, Troy D. Hanson <http://uthash.sourceforge.net>
All rights reserved.

Redistribution and use in source and binary forms, with or without
modification, are permitted provided that the following conditions are
met:

Redistributions of source code must retain the above copyright notice,
this list of conditions and the following disclaimer.

THIS SOFTWARE IS PROVIDED BY THE COPYRIGHT HOLDERS AND
CONTRIBUTORS "AS IS" AND ANY EXPRESS OR IMPLIED WARRANTIES,
INCLUDING, BUT NOT LIMITED TO, THE IMPLIED WARRANTIES OF
MERCHANTABILITY AND FITNESS FOR A PARTICULAR PURPOSE
ARE DISCLAIMED. IN NO EVENT SHALL THE COPYRIGHT OWNER OR
CONTRIBUTORS BE LIABLE FOR ANY DIRECT, INDIRECT, INCIDENTAL,
SPECIAL, EXEMPLARY, OR CONSEQUENTIAL DAMAGES (INCLUDING, BUT
NOT LIMITED TO, PROCUREMENT OF SUBSTITUTE GOODS OR SERVICES;
LOSS OF USE, DATA, OR PROFITS; OR BUSINESS INTERRUPTION)
HOWEVER CAUSED AND ON ANY THEORY OF LIABILITY, WHETHER IN
CONTRACT, STRICT LIABILITY, OR TORT (INCLUDING NEGLIGENCE OR
OTHERWISE) ARISING IN ANY WAY OUT OF THE USE OF THIS SOFTWARE,
EVEN IF ADVISED OF THE POSSIBILITY OF SUCH DAMAGE.

Iperf

Copyright (c) 1999-2007, The Board of Trustees of the University of
Illinois

All Rights Reserved. Iperf performance test

Mark Gates

Ajay Tirumala

Jim Ferguson

Jon Dugan

Feng Qin

Kevin Gibbs

John Estabrook

National Laboratory for Applied Network Research

National Center for Supercomputing Applications

University of Illinois at Urbana-Champaign

<http://www.ncsa.uiuc.edu>

Permission is hereby granted, free of charge, to any person obtaining
a copy of this software (Iperf) and associated documentation files
(the "Software"), to deal in the Software without restriction, including
without limitation the rights to use, copy, modify, merge, publish,
distribute, sublicense, and/or sell copies of the Software, and to permit
persons to whom the Software is furnished to do so, subject to the
following conditions:

Redistributions of source code must retain the above copyright notice,
this list of conditions and the following disclaimers.

Redistributions in binary form must reproduce the above copyright
notice, this list of conditions and the following disclaimers in the
documentation and/or other materials provided with the distribution.

Neither the names of the University of Illinois, NCSA, nor the names of
its contributors may be used to endorse or promote products derived
from this Software without specific prior written permission. THE
SOFTWARE IS PROVIDED "AS IS", WITHOUT WARRANTY OF ANY KIND,
EXPRESS OR IMPLIED, INCLUDING BUT NOT LIMITED TO THE WARRANTIES
OF MERCHANTABILITY, FITNESS FOR A PARTICULAR PURPOSE AND
NONINFRINGEMENT. IN NO EVENT SHALL THE CONTRIBUTORS OR
COPYRIGHT HOLDERS BE LIABLE FOR ANY CLAIM, DAMAGES OR OTHER
LIABILITY, WHETHER IN AN ACTION OF CONTRACT, TORT OR OTHERWISE,
ARISING FROM, OUT OF OR IN CONNECTION WITH THE SOFTWARE OR
THE USE OR OTHER DEALINGS IN THE SOFTWARE.

Reference

English	Hereby, Samsung Electronics, declares that this Air conditioner is in compliance with the essential requirements and other relevant provisions of Directive 1999/5/EC.
	The official Declaration of conformity may be found at http://www.samsung.com , go to Support > Search Product Support and enter the model name. This equipment may be operated in all EU countries. In France, this equipment may only be used indoors.



**Aplikacja Smart klimatyzatora może ulec modyfikacji w celu poprawy jakości, bez
uprzedniego powiadomienia, może także zostać usunięta w wyniku uwarunkowań
producentów.**



DB68-04215A-00





Aplikacja Smart A/C

Klimatyzator

instrukcja obsługi



100%
Recycled Paper

Niniejsza instrukcja została wydrukowana w całości na papierze makulaturowym.

wyobraź sobie możliwości

CE0678

